





Working Together on Adjacent Lands

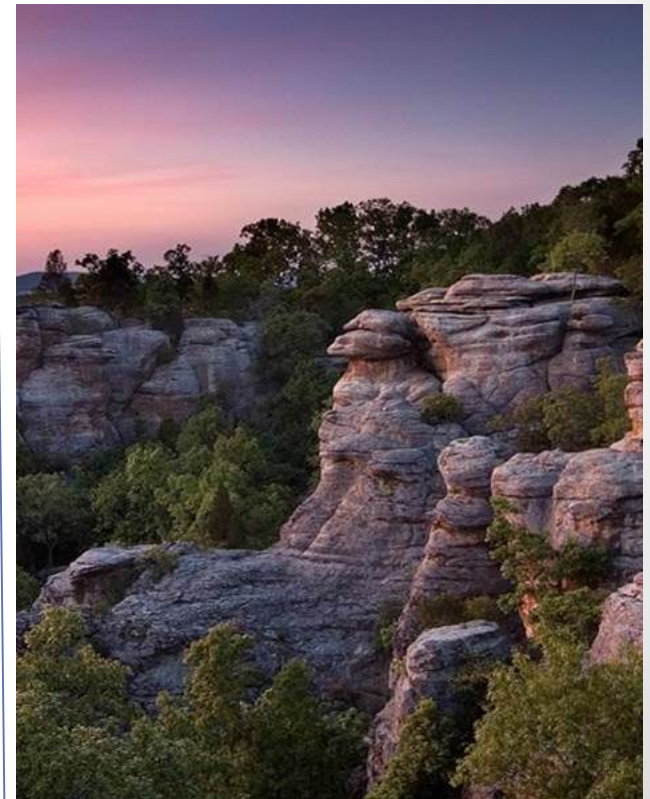


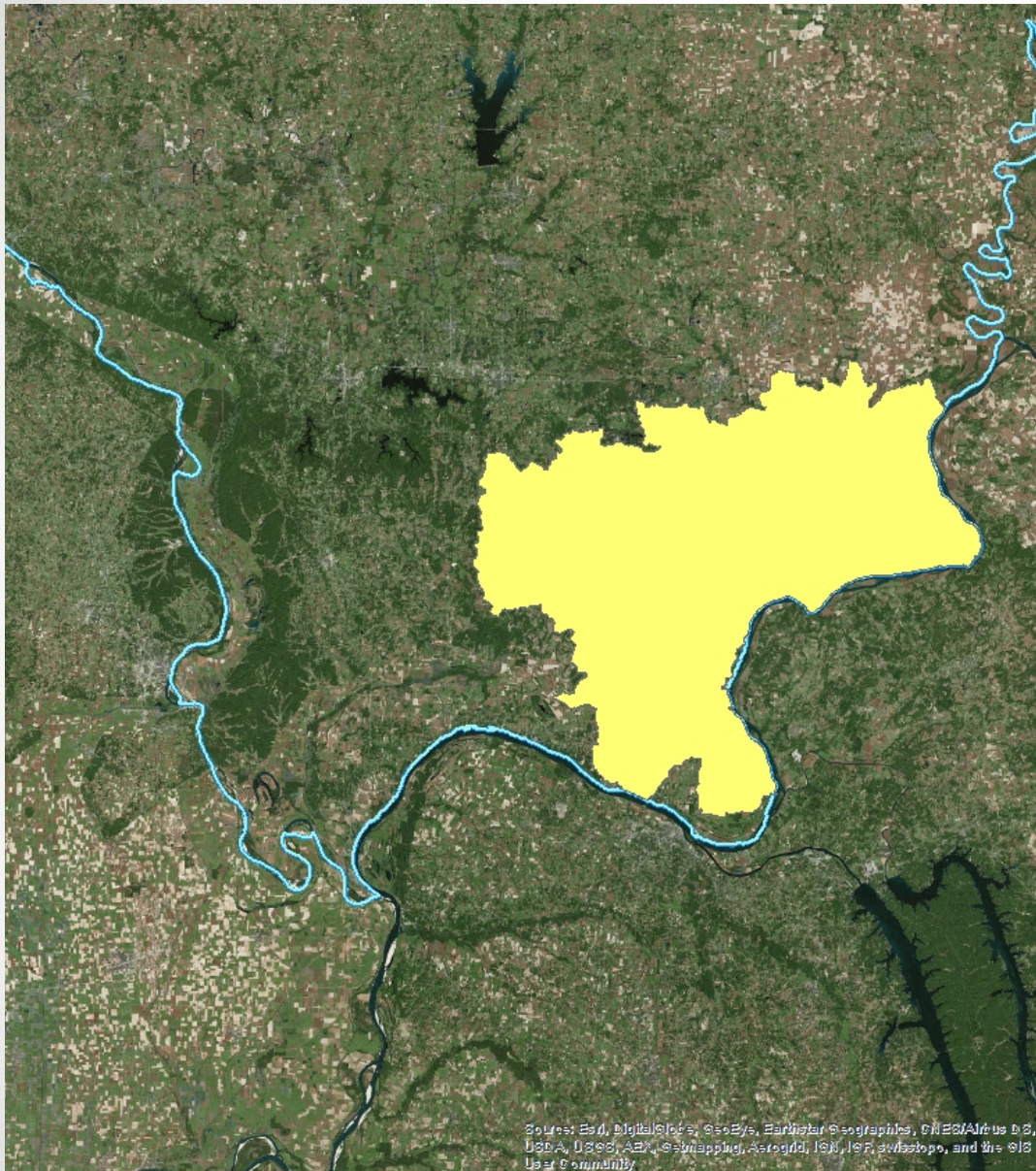
Brendan Cain
Forest Supervisor
Shawnee National Forest



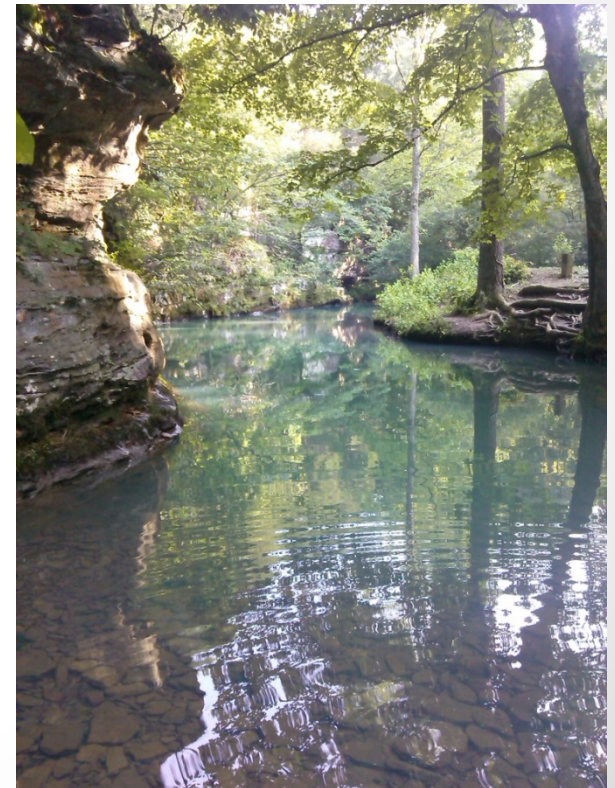


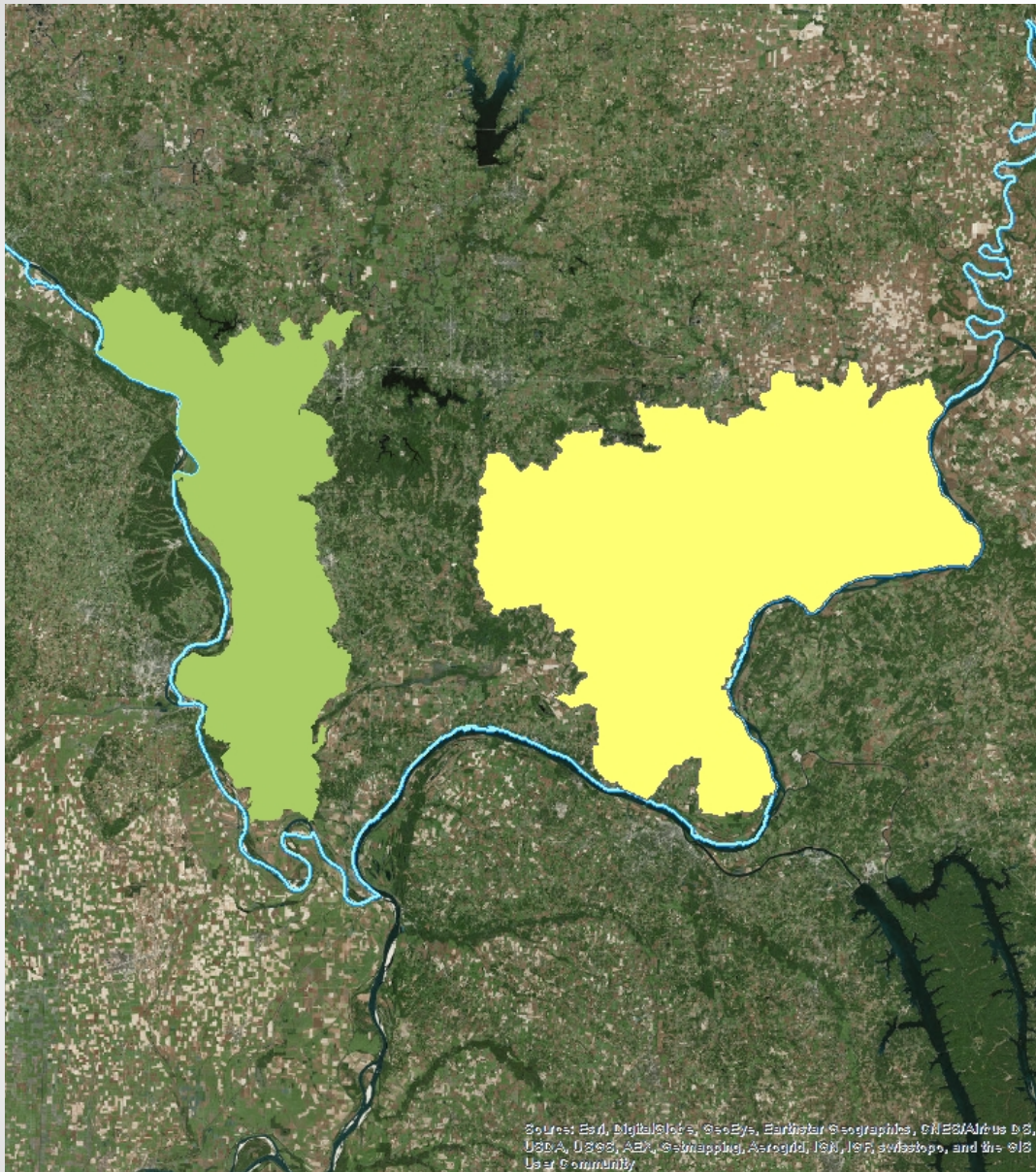
Southern Illinois





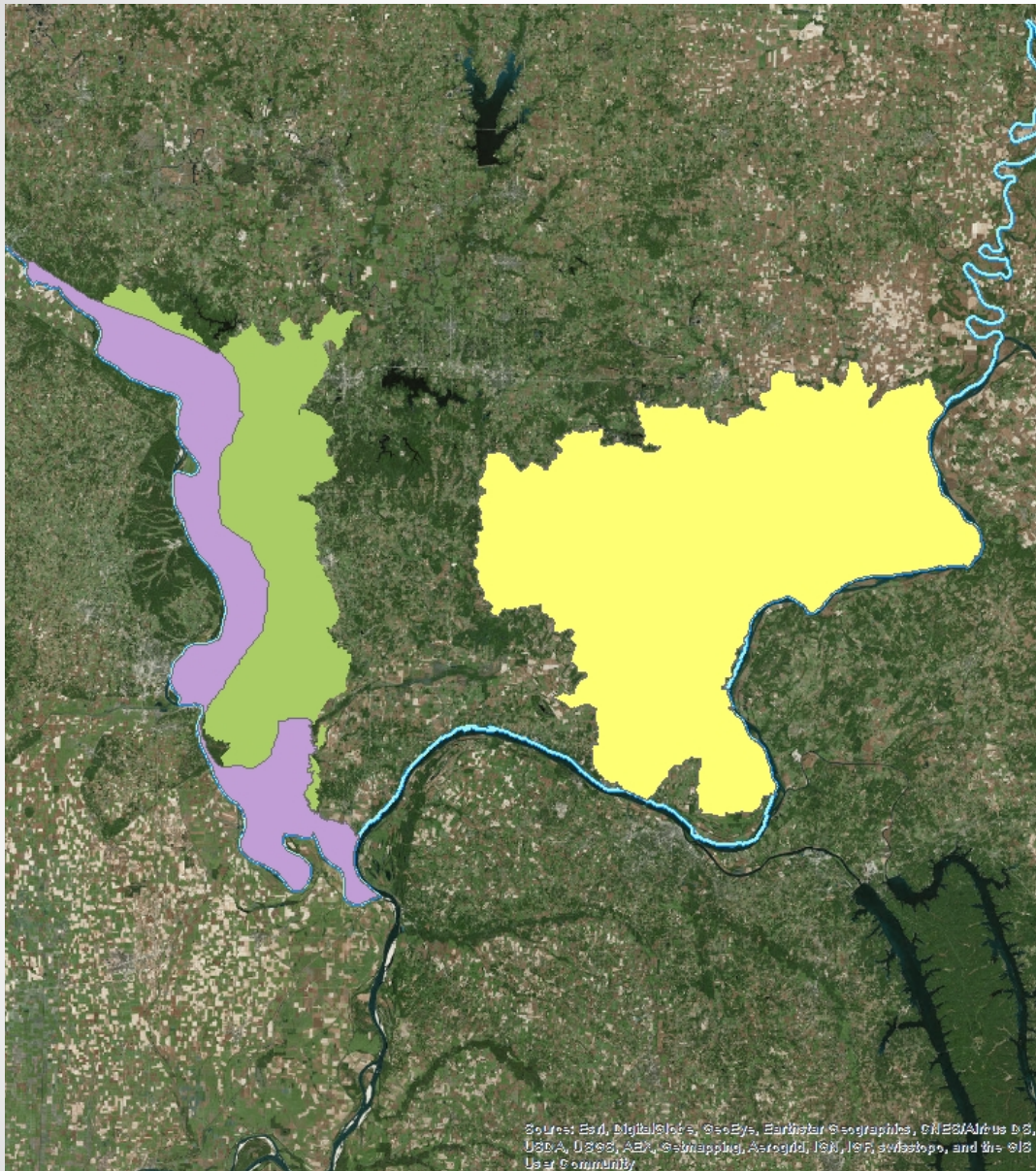
Eastern Shawnee





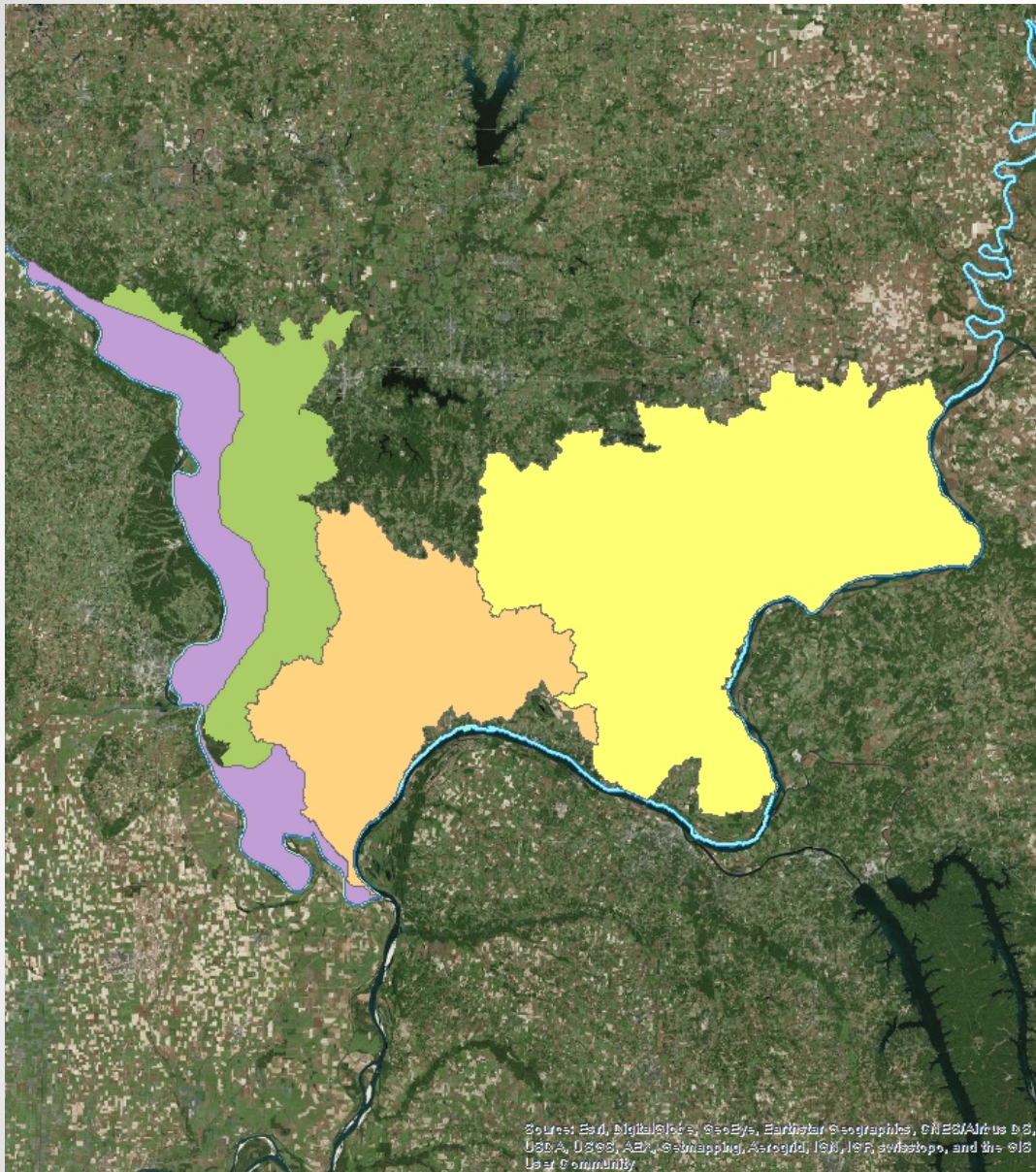
Illinois Ozarks





Middle Mississippi

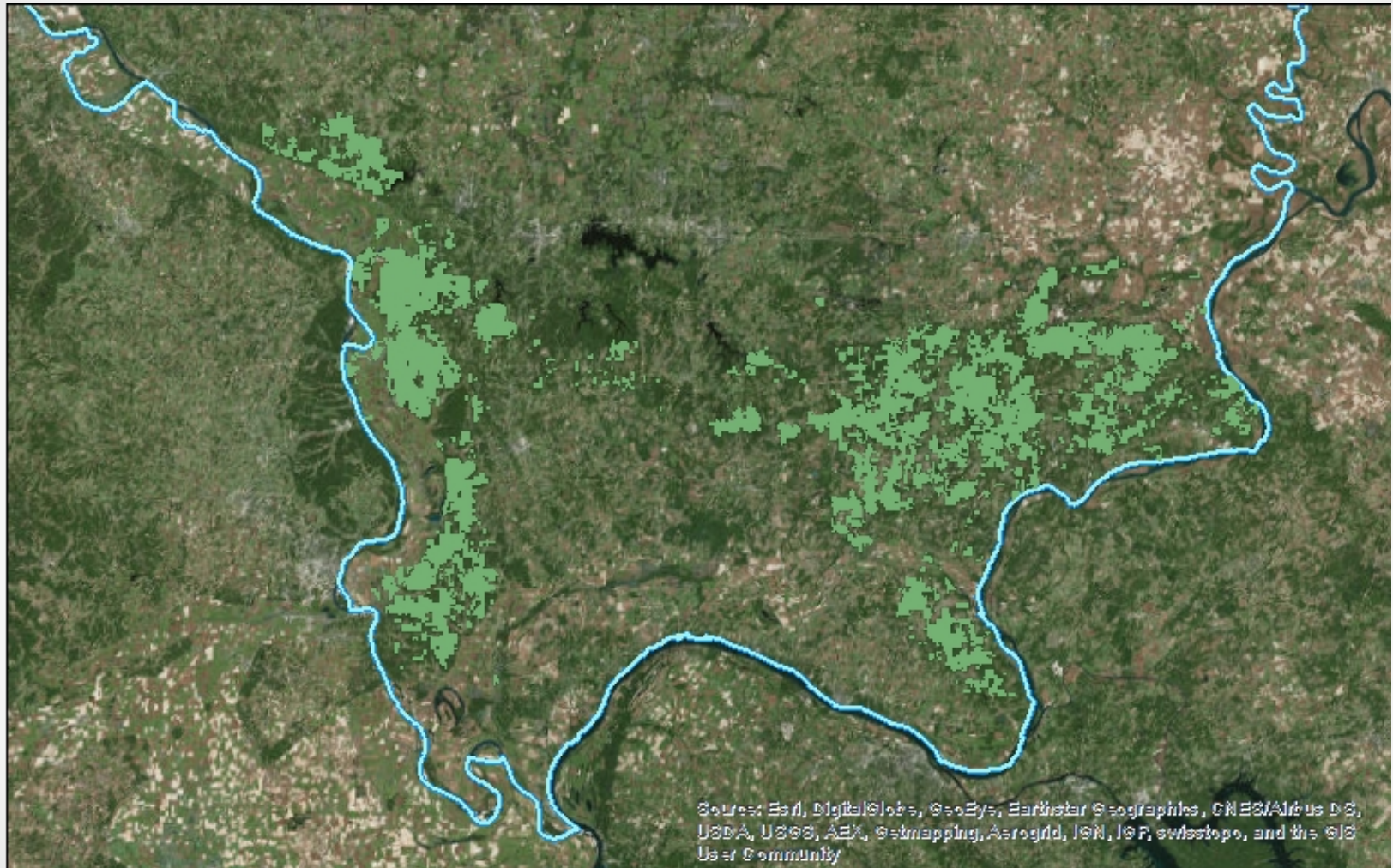




Cache River Wetlands



Southern Illinois



Source: Esri, DigitalGlobe, GeoEye, Earthstar Geographics, CNES/Airbus DS, USDA, USGS, AeroX, Getmapping, Aerogrid, IGN, IGP, swisstopo, and the GIS User Community

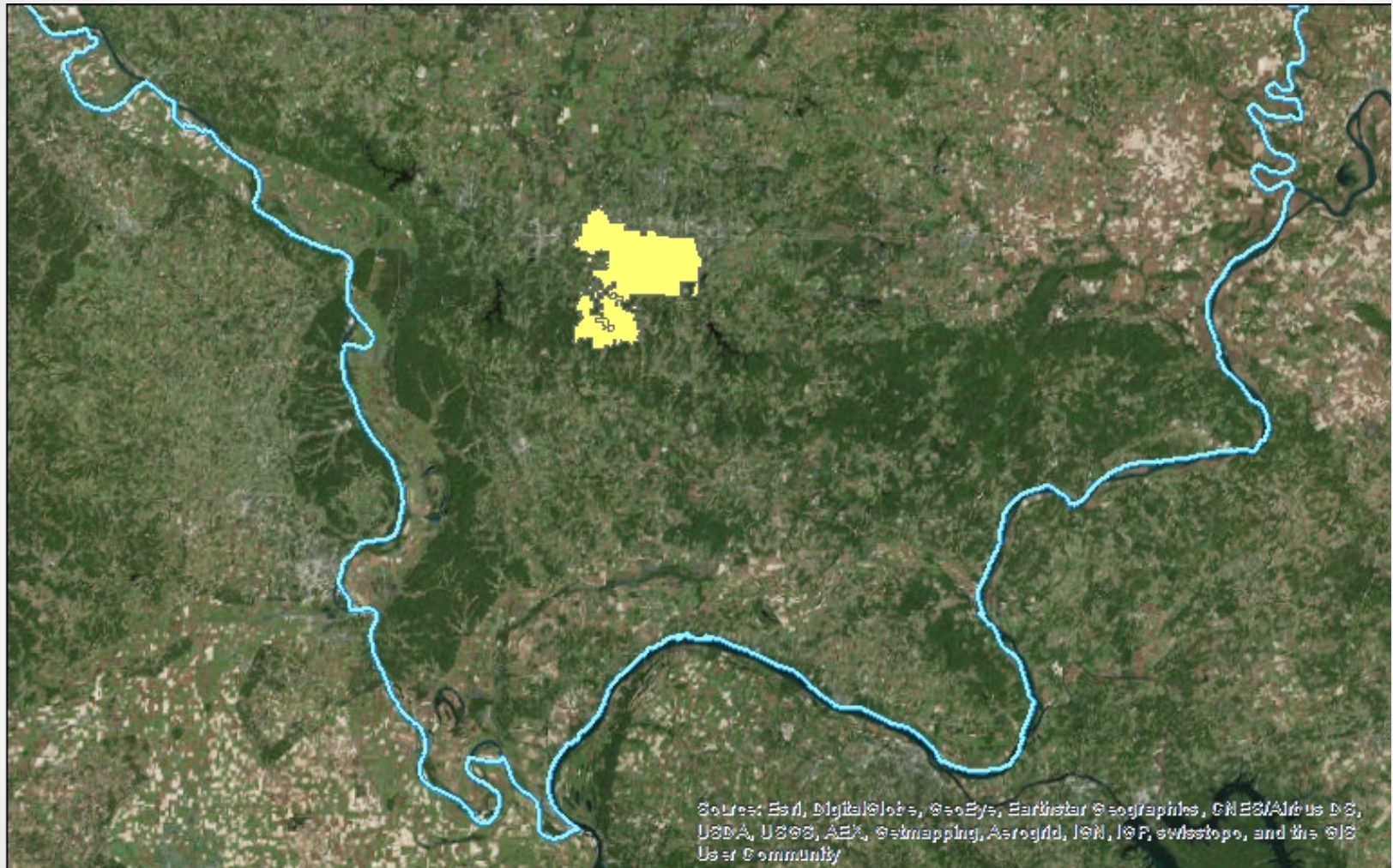
Shawnee National Forest

Southern Illinois



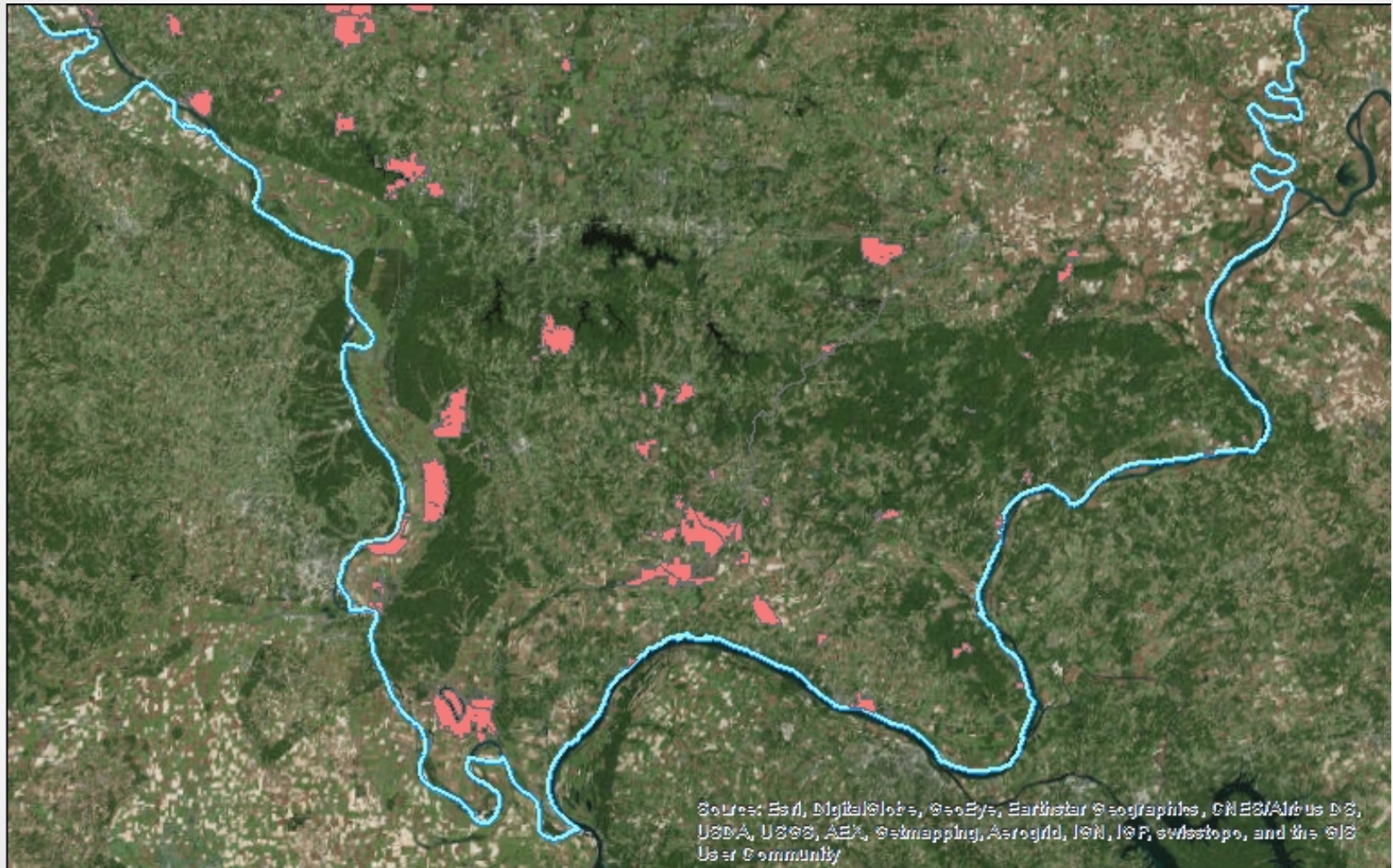
Cypress Creek National Wildlife Refuge

Southern Illinois



Crab Orchard National Wildlife Refuge

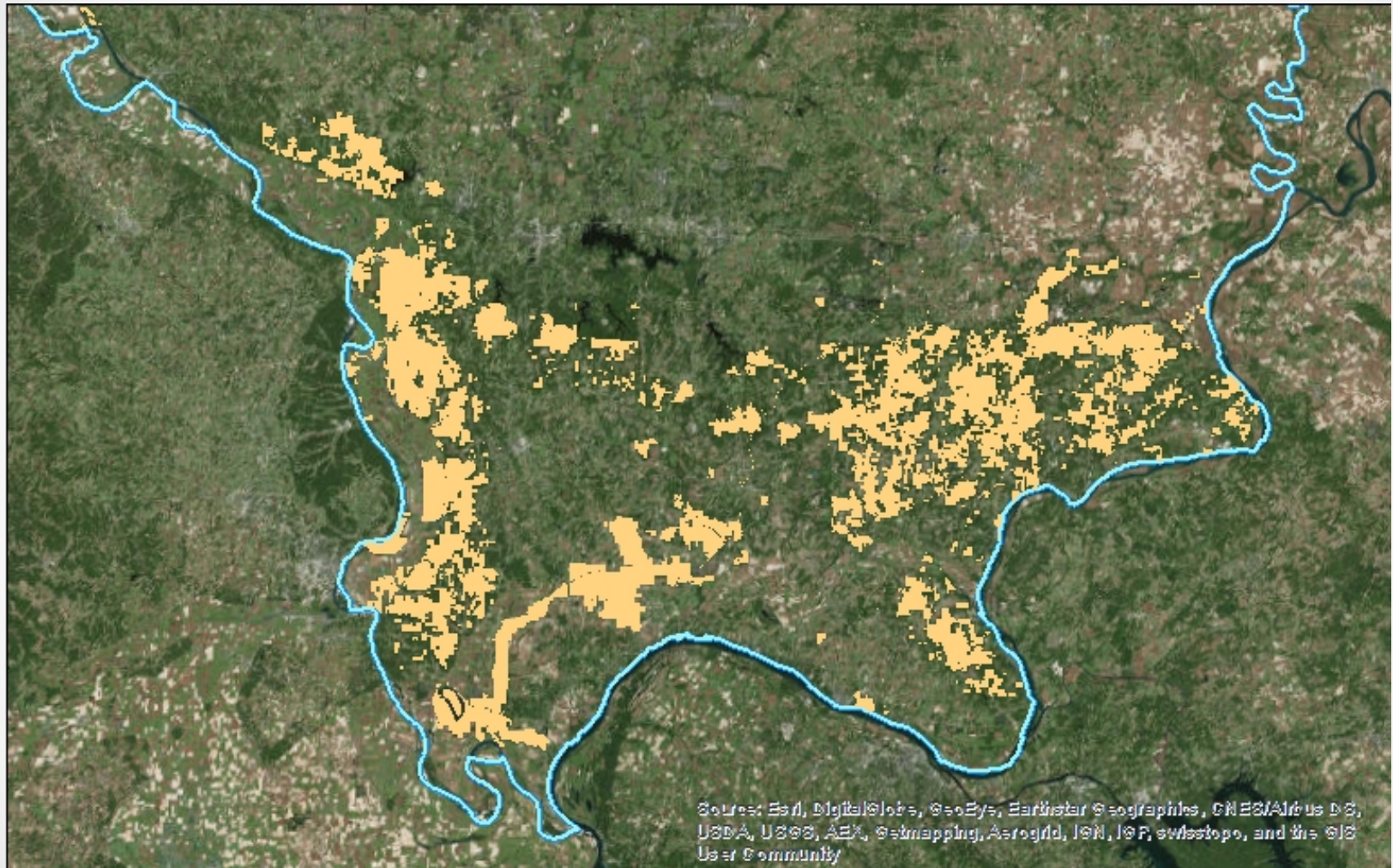
Southern Illinois



Source: Esri, DigitalGlobe, GeoEye, Earthstar Geographics, CNES/Airbus DS, USDA, USGS, AeroX, Getmapping, Aerogrid, IGN, IGP, swisstopo, and the GIS User Community

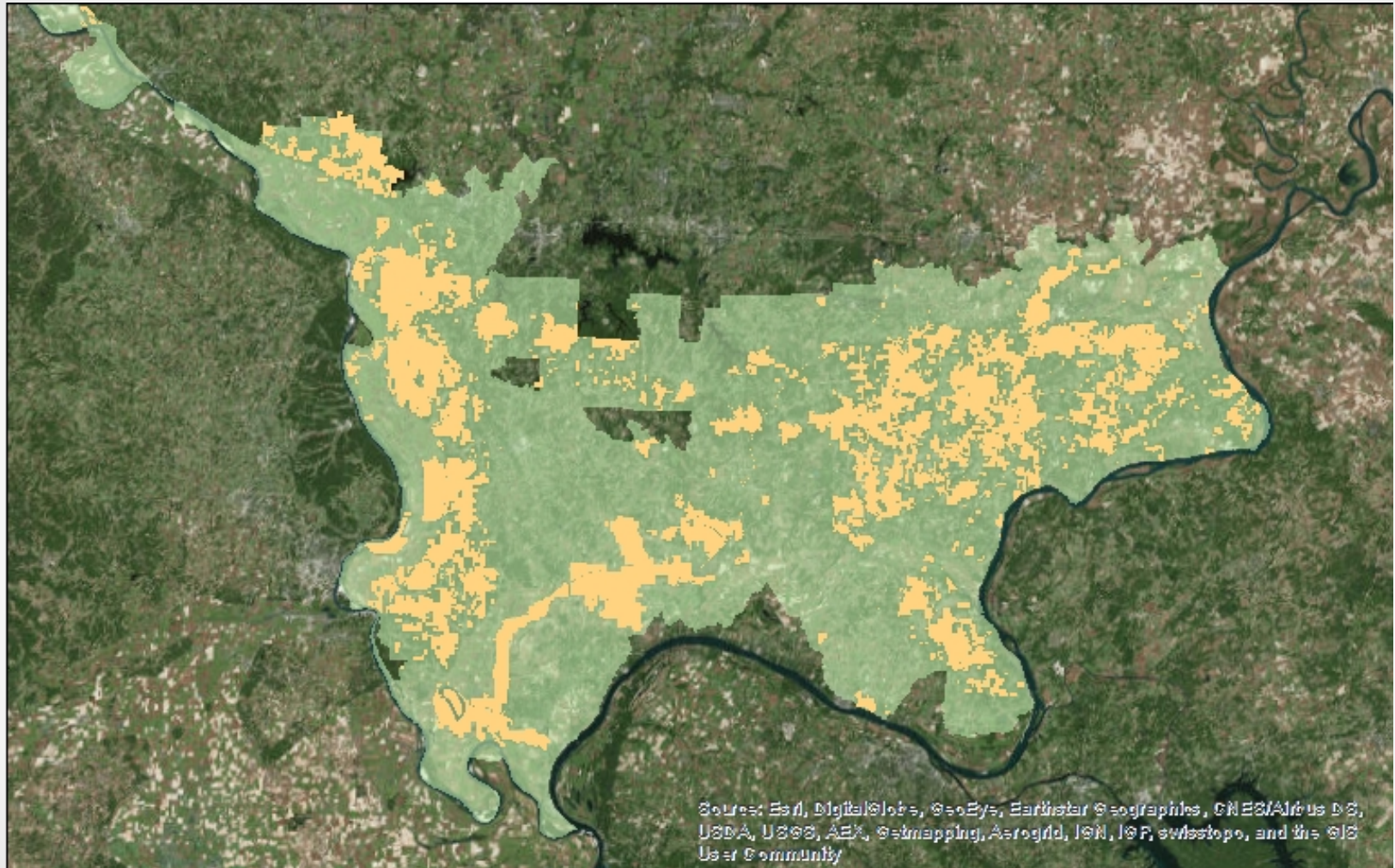
Illinois Department of Natural Resources

Southern Illinois



State and Federal ownership

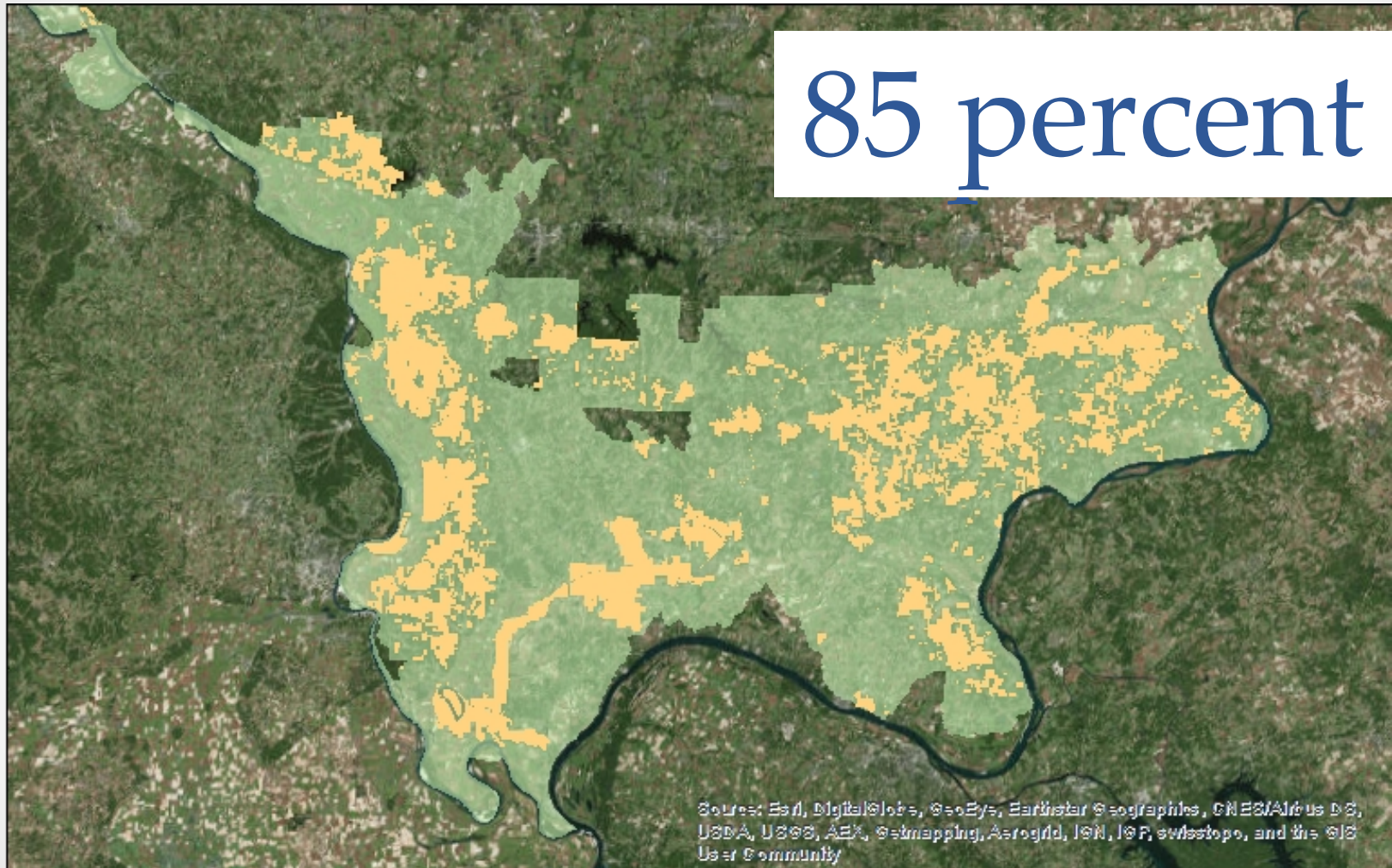
Southern Illinois



This is what we seek to manage.

Southern Illinois

85 percent



Owned by private landowners

Working Together





We seek out the resources we need to make conservation stronger.

\$2 million annually in grants



We innovate when we have a challenge.



The Nature Conservancy Forest Team



Southern Illinois Prescribed Burn Association





An opportunity to partner with the Forest Service.



We innovate when we have a challenge.





River to River Cooperative Weed Management Area



The Nature Conservancy Strike Team





We work to protect communities and make them stronger.



Kinkaid Lake provides drinking water to Murphysboro and surrounding communities, while Cedar Lake provides water to Carbondale and surrounding communities.

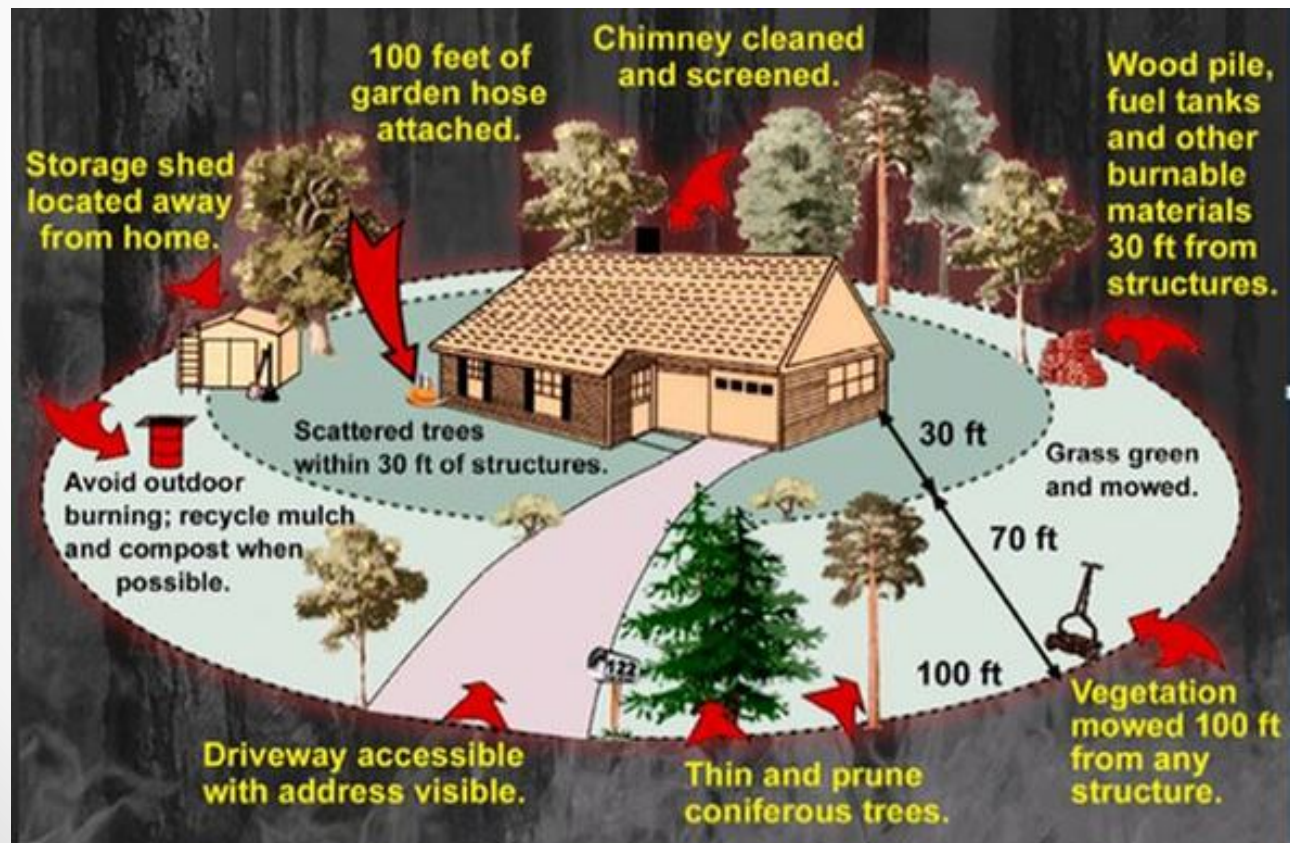


We work with those who recreate on the forest for fun.



People like to fish, swim,
hunt, paddle, hike, bike,
climb and ride horses in
our forests.

We assist communities through Community Wildfire Protection Plans.



We are getting more tools every day.



The future of Southern Illinois Forests

